

2023 in
Review

NORTHWOODS COOPERATIVE WEED MANAGEMENT AREA



NCWMA

- **Funding:** USDA-FS-GLRI-CWMA Grant
USFS-GLRI-BOAT WASH FUNDING
DNR-WMA-PFG
DNR-GLRI-KNOTWEED CONTROL
- **Three Invasive Species Technicians in 2023**
 - One part-time
 - Two full-time (Wed-Sun)
 - Boat wash on weekends.
 - Invasive plant treatments Wed-Fri.



WORKSHOP: Invasive Species and Alternative Control Methods



Abraham Stone presents about research on a native fungus for biocontrol of buckthorn.



Eric North, USFS, demonstrates using a propane torch.



Wendy Stein discusses managing leafy spurge on her property.



Steve Garske demonstrates the biocontrol insect collector for leafy spurge

WORKSHOP

Invasive Species
and Alternative
Control Methods



Travis Bartnick, GLIFWC, discusses treating yellow iris.



Alex Selle, DNR, demonstrates methods to treat yellow iris.



Tony Janisch, City of Washburn, discusses the City's work in managing invasive plants along the lakefront trail.

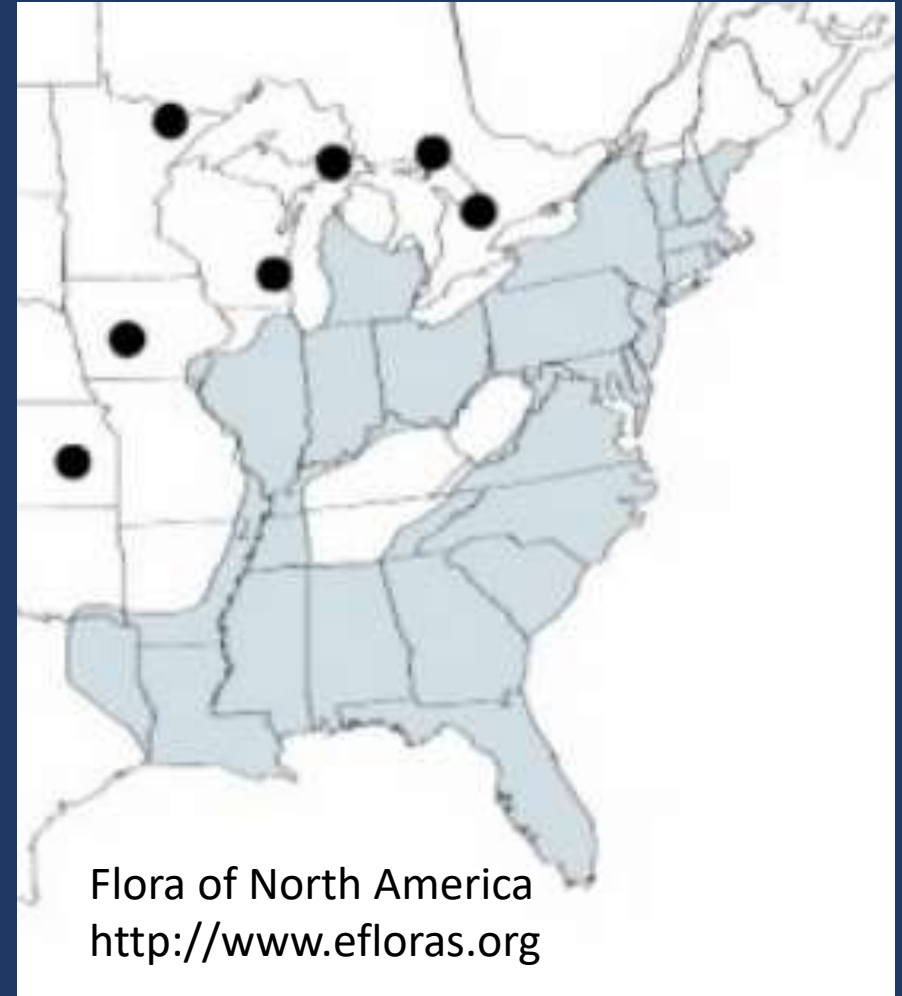


Jake Williams, Regenerative Ruminants, discusses using goats to managed buckthorn.

Arrow arum (*Peltandra virginica*)

Invasive or not?

- WI is on the edge of the native range.
- Consider case by case depending on infestation.



Butterfly Dock (*Petasites hybridus*)

Treatment in 2022

- RM43 Total Vegetation Control (43% Glyphosate with Imazapyr)



Three small butterfly dock plants were hand-pulled.

Dame's Rocket (*Hesperis matronalis*)

- Restricted in Wisconsin
- LEAVES: Lance-shaped, finely toothed, and alternate with short to no leaf stalk
- FLOWERS: Four-petaled flowers of white, pink or purple
- The NCWMA has not actively treated it. But maybe we should treat in natural areas.





Dalmatian toadflax

Treatment by hand-pulling.

- GLIFWC (44 patches)
- NCWMA (30 patches)





European Marsh thistle

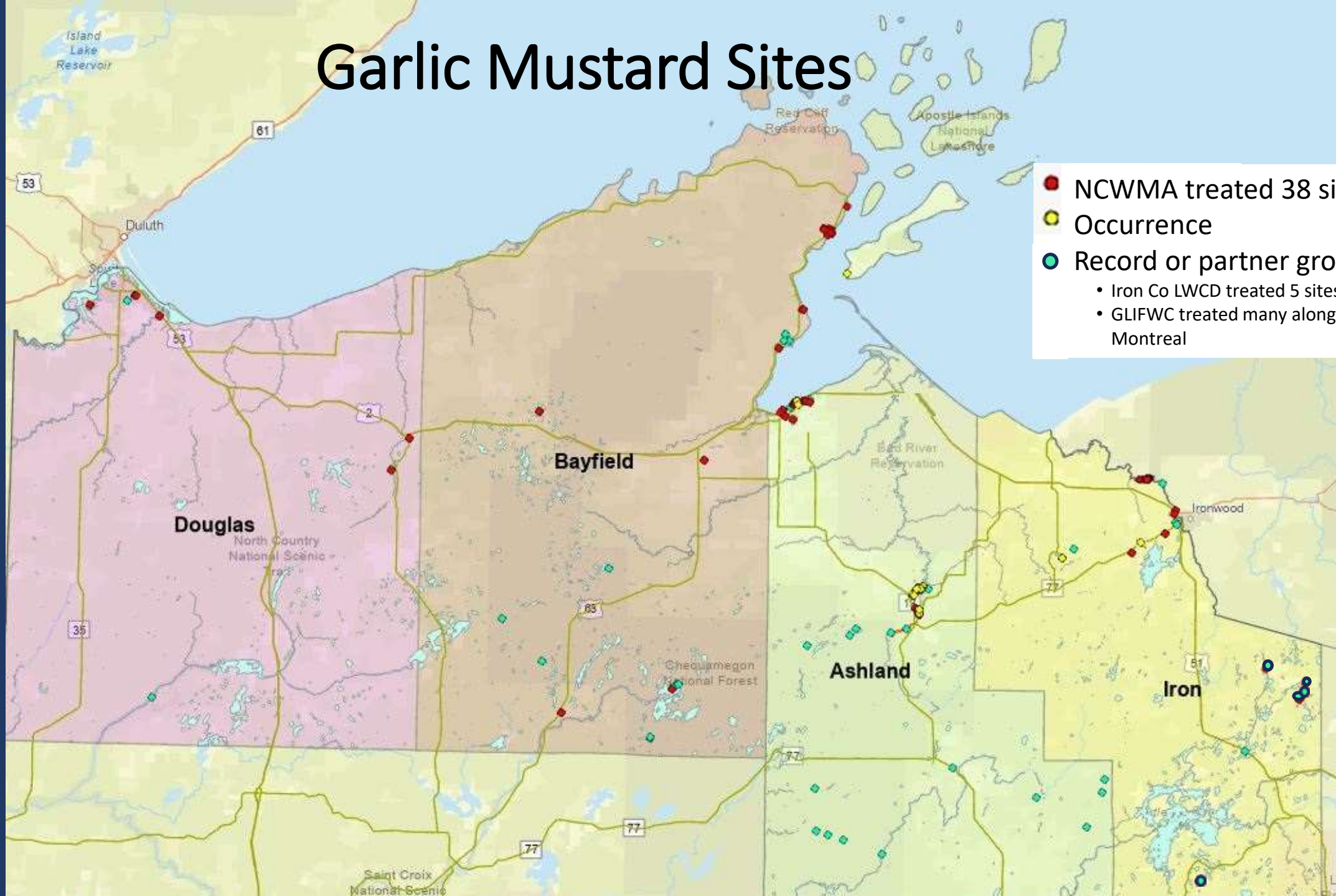
Iron Co: 8 sites

GLIFWC: 2 sites.

Difficult species to control.



Garlic Mustard Sites



- NCWMA treated 38 sites
- Occurrence
- Record or partner group treated:
 - Iron Co LWCD treated 5 sites
 - GLIFWC treated many along the Bad River and Montreal

Garlic Mustard Sites

Ashland County		Douglas County	
Ashland	13	Brule	2
Butternut	4	Superior	4
Clam lake	5	Wascott	1
Glidden	1		7
Mellen	8		
	31		
Bayfield County		Iron County	
Bayfield	12	Fisher	2
Cable	4	Hurley	6
Drummond	2	Mercer	1
Eileen	1	Montreal	1
Iron River	1	Pence	1
Lake Namekagon	5	Springstead	1
Lake Owen	1	Upton	3
Washburn	6		15
	32		
Total reported sites: 85			



Garlic Mustard hand-pull Events

The NCWMA hosted 7 events



Cable

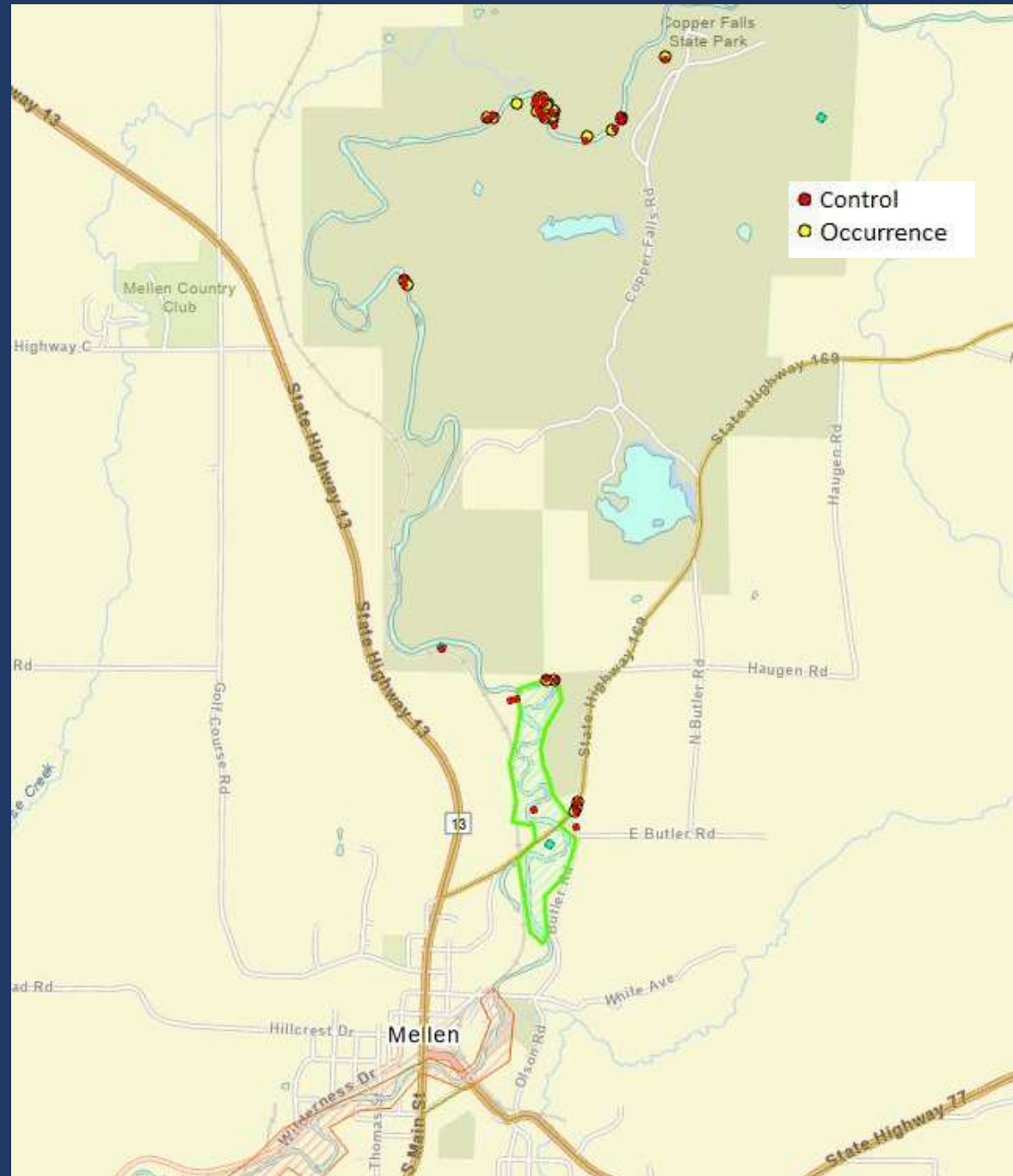


Superior



Garlic Mustard along the Bad River Floodplain

- The NCWMA had group hand-pulls within the green area.
- The worst garlic mustard news of the year was the new sites found downstream, in Copper Falls State Park.
 - GLIFWC surveyed and pulled these sites.





Garlic Mustard hand-pulling along the Bad River

- Northland College Students came to help
- Many partners came to help including NCWMA, GLIFWC, Ashland Co, the DNR (including Dara Fillmore [top right]), the Bad River Band,
- The NCWMA hosted a cook-out at Copper Falls State Park. Colleen Matula managed the grill.



Garlic Mustard along the Montreal River Floodplain

- The NCWMA had group hand-pull in Hurley with Hurley's 6th Grade.
- South of Hwy 2, a gas pipeline was excavating in the garlic mustard area.
- Garlic mustard was treated downstream (north) by contractors.
- The NCWMA pulled other sites in the area.





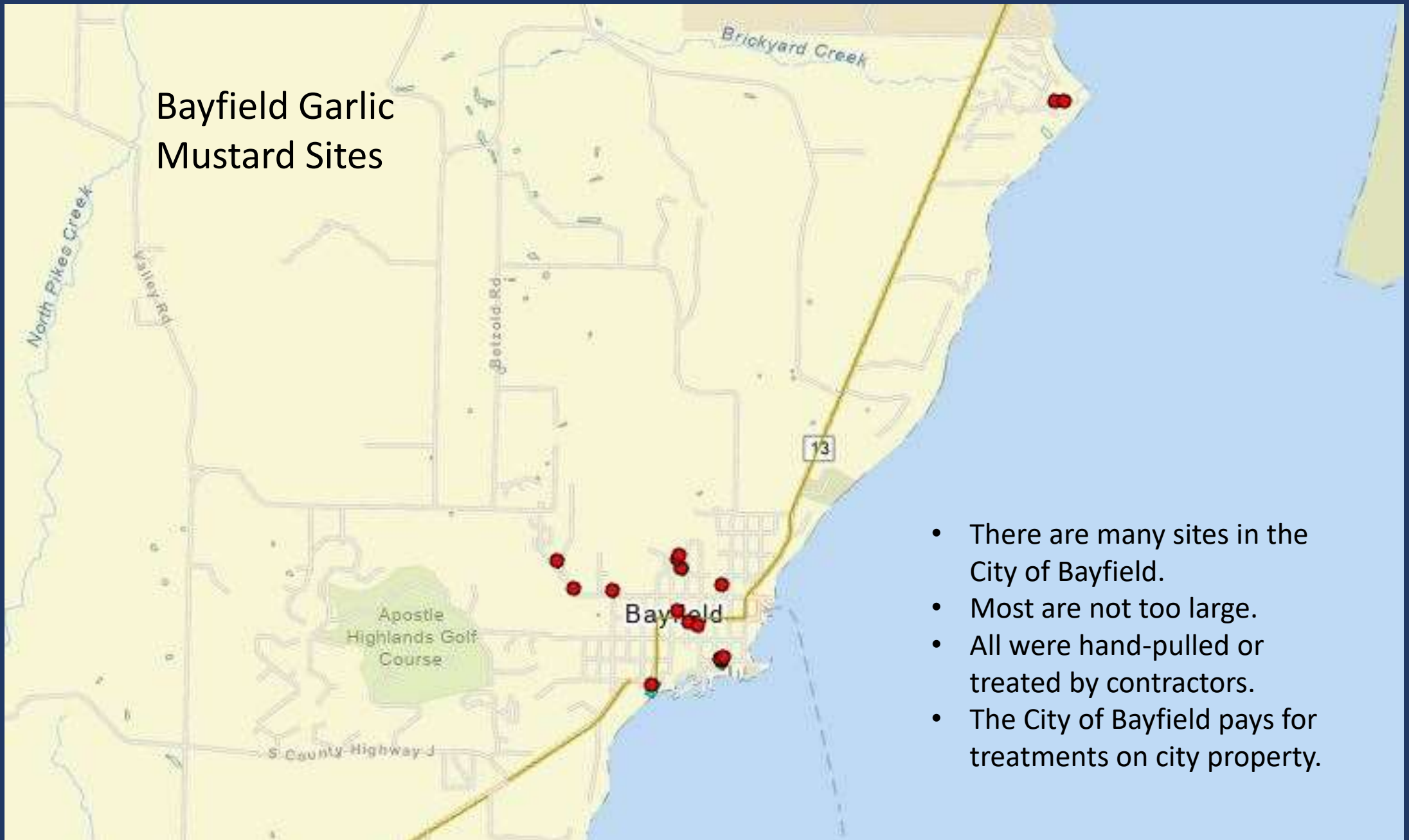
Garlic Mustard Hand-pull along the Montreal River



Ashland Garlic Mustard Sites



Bayfield Garlic Mustard Sites



- There are many sites in the City of Bayfield.
- Most are not too large.
- All were hand-pulled or treated by contractors.
- The City of Bayfield pays for treatments on city property.

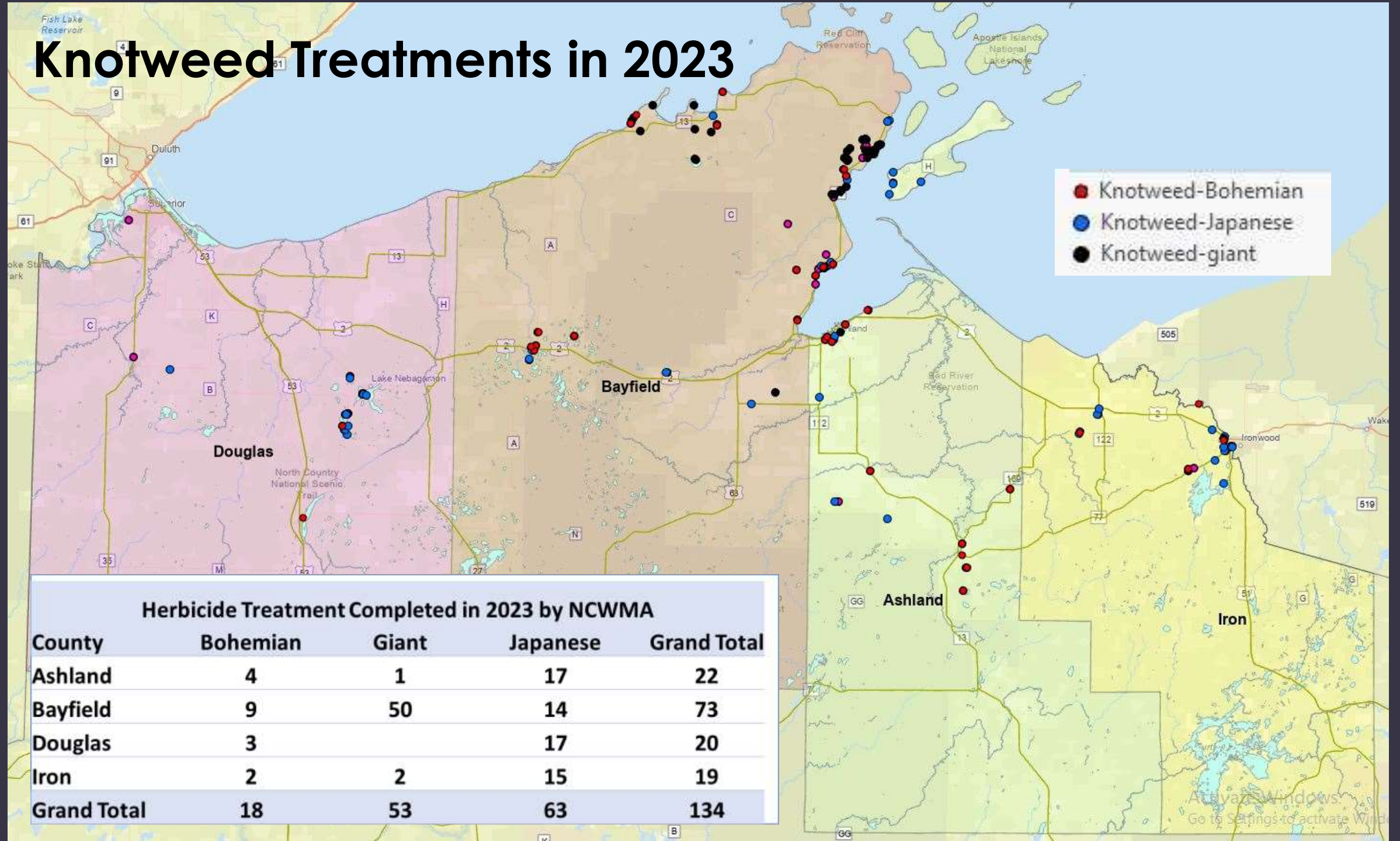


Giant Hogweed

One site that was treated by Iron County LWCD.



Knotweed Treatments in 2023



County	Total Documented sites	Herbicide completed 2023	Surveyed, but no treatment	No plants found in 2023	Eradicated	New 2023
Ashland	42	22	8	1	3	5
Bayfield	178	73	9	19	8	8
Douglas	67	20	4			8
Iron	34	19	1	2	2	
Grand Total	321	134	22	22	13	21



A giant knotweed leaf.



Japanese knotweed leaves.

Knotweed Treatments



Knotweed cutting was completed in June and July.



Herbicide treatments were completed in August and September.

Knotweed Treatments



Cutting in 2022



Day of Herbicide Treatment 2022

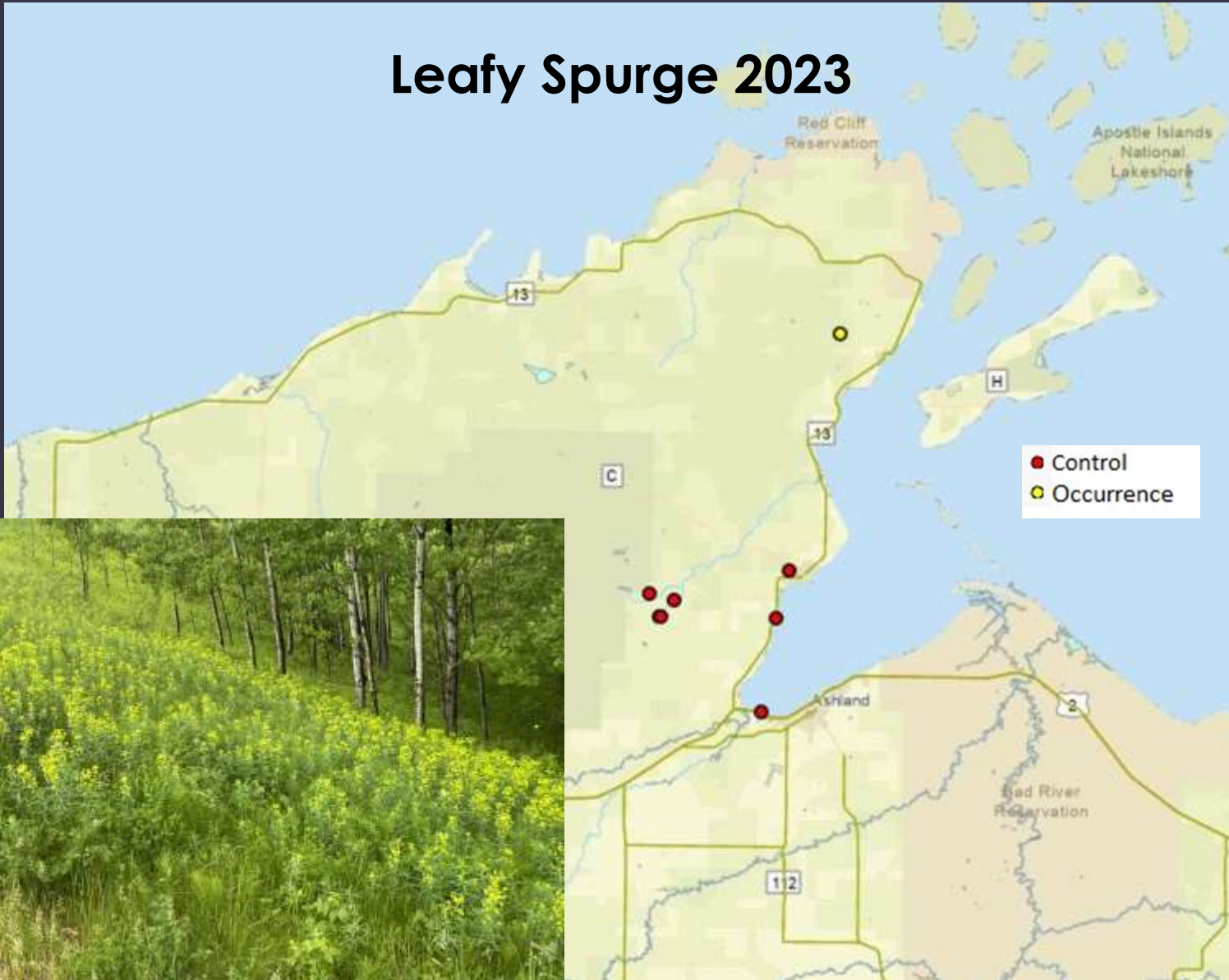


Fall 2022



July 2023

Leafy Spurge 2023



Leafy Spurge

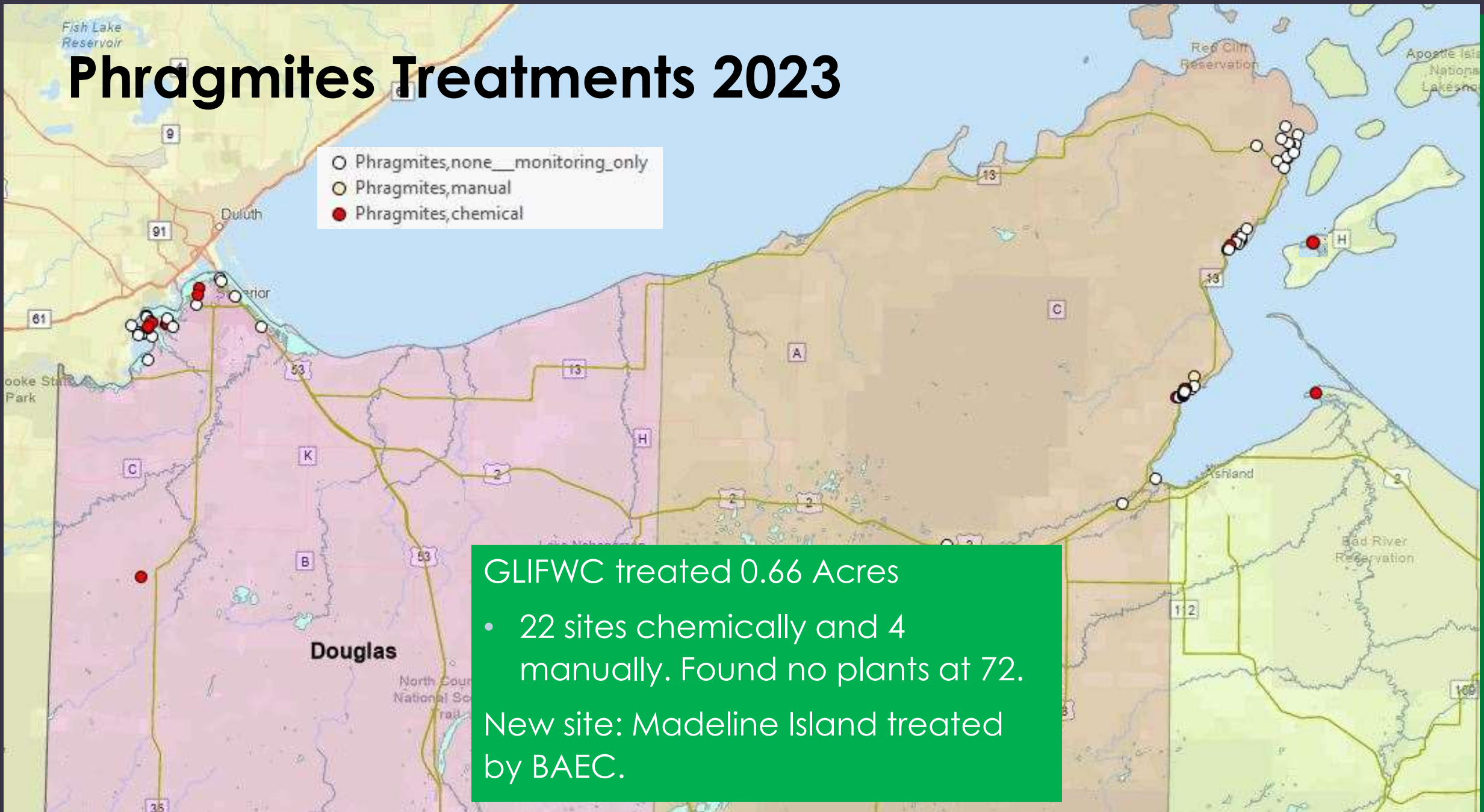
Treatments:

GLIFWC: 11 chemical, 1 biological

DNR: 1



Phragmites Treatments 2023



Phragmites On Madeline Island

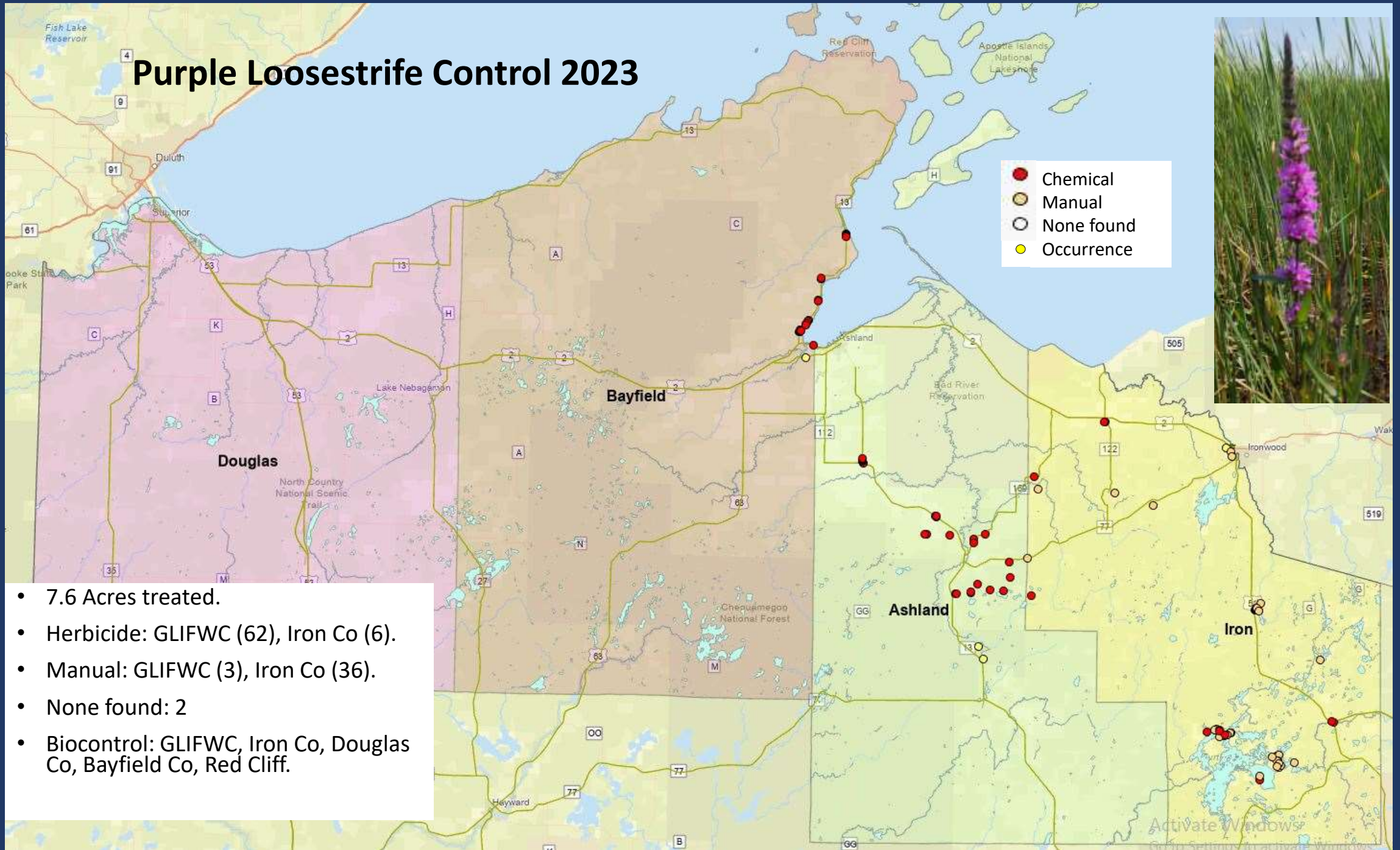


September 2022: 1.5 acres, before treatment



July 2023: Small and less dense.
Treated by BAEC on Sept. 22, 2023.

Purple Loosestrife Control 2023



Purple Loosestrife

Iron County purple loosestrife control



Invasive are not present
if you don't look



Improvement in one year: Manitowish
PL pulled in 2022 vs 2023



Purple Loosestrife

Iron County purple loosestrife control



Above: Super tall purple loosestrife plants

Left: Super bushy purple loosestrife.

Right: Zach using snowshoes in a bog.





Teasels

- Eight sites: 1.5 acres total.
- GLIFWC treats all but Port Wing.
- NCWMA treats Port Wing and helps with two others.



Wild Parsnip Treatments 2023

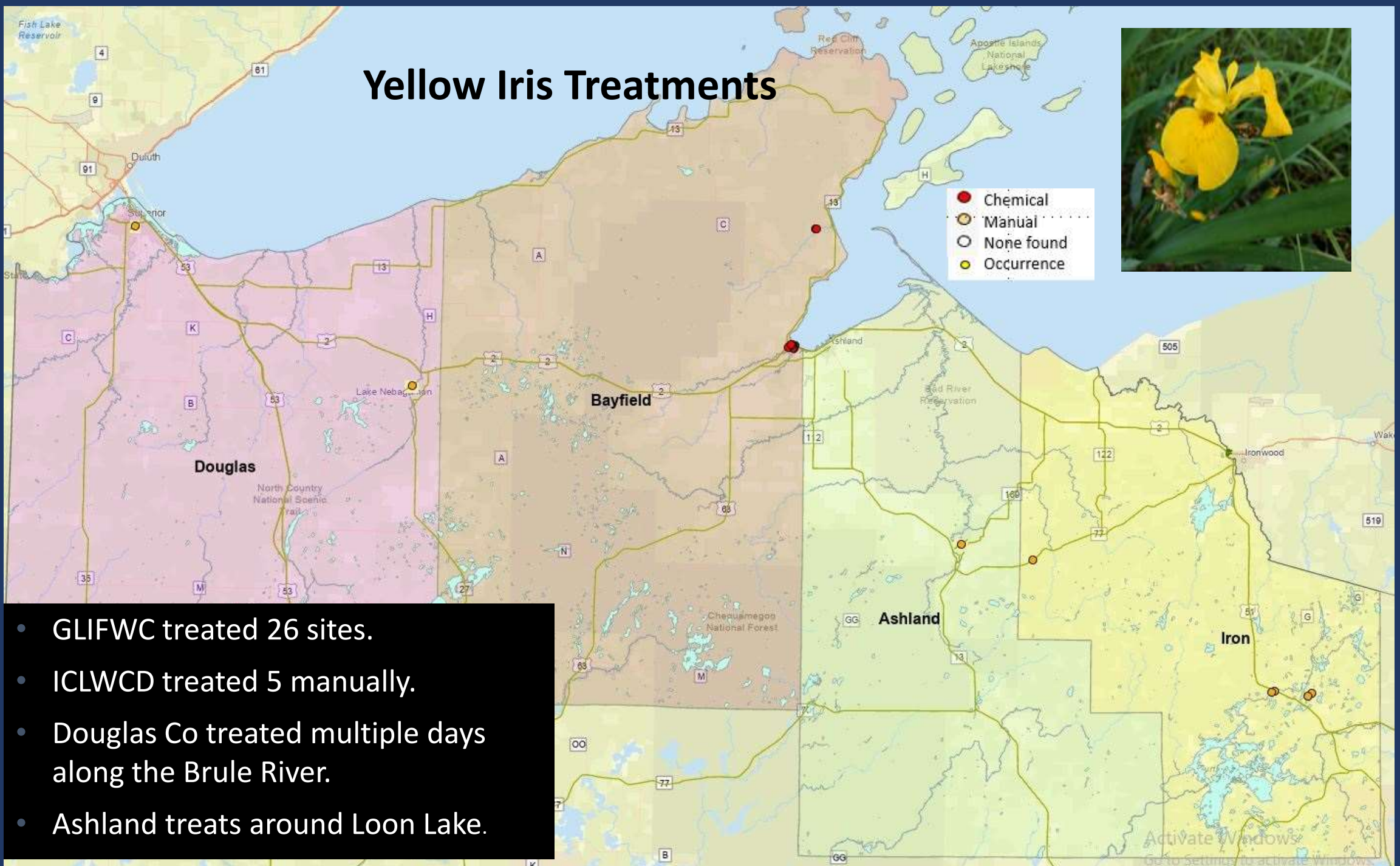
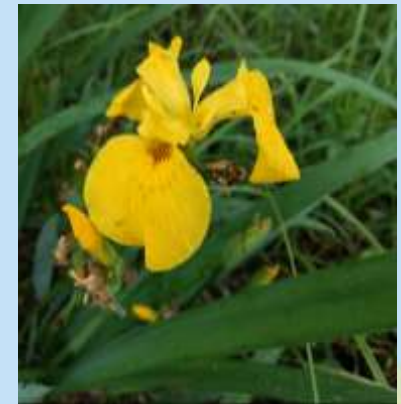
- Chemical
- Manual
- None found
- Occurrence

	GLIFWC	Iron County LWCD	NCWMA
chemical	31	8	
manual	98	12	6
Total	129	20	6

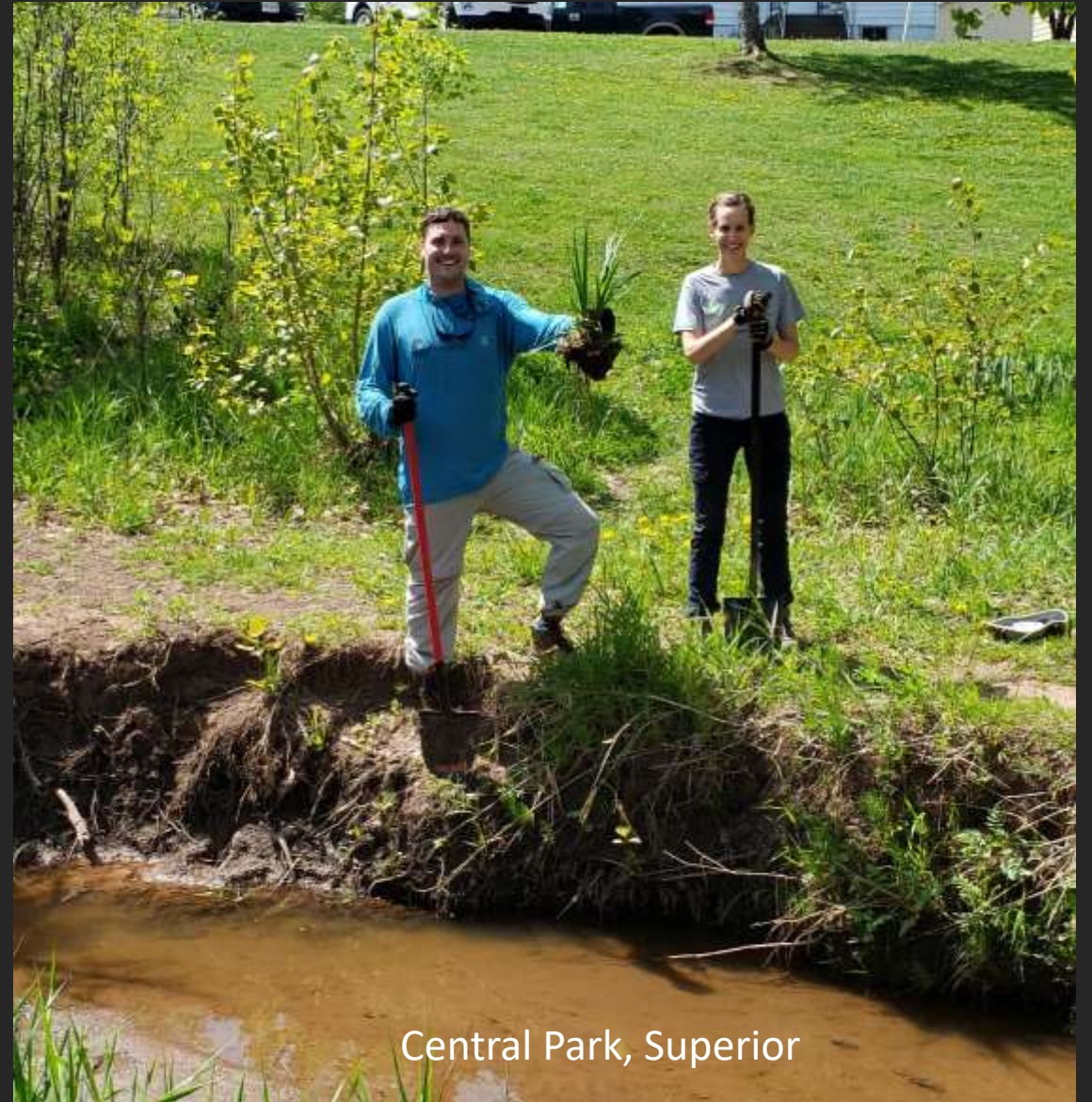
Wild Parsnip



Yellow Iris Treatments



- GLIFWC treated 26 sites.
- ICLWCD treated 5 manually.
- Douglas Co treated multiple days along the Brule River.
- Ashland treats around Loon Lake.



Central Park, Superior

Shrubs and Trees

- DNR treats buckthorn on Clough Island and the White River area.
- NCWMA: DNR Weed Management Area Grants: Treating buckthorn on private property. Planning to apply to treat bristly locust.
- Iron Co going to start treating **black locust**.
- Apostle Islands N. L. and DNR treat *Rosa rugosa*.





Other Species



2014 © Peter M. Dziuk

Burnet saxifrage

Pimpinella saxifraga

Along Hwy 63 from
Hwy 2 to Seele

Hwy 118



WILD CHERVIL

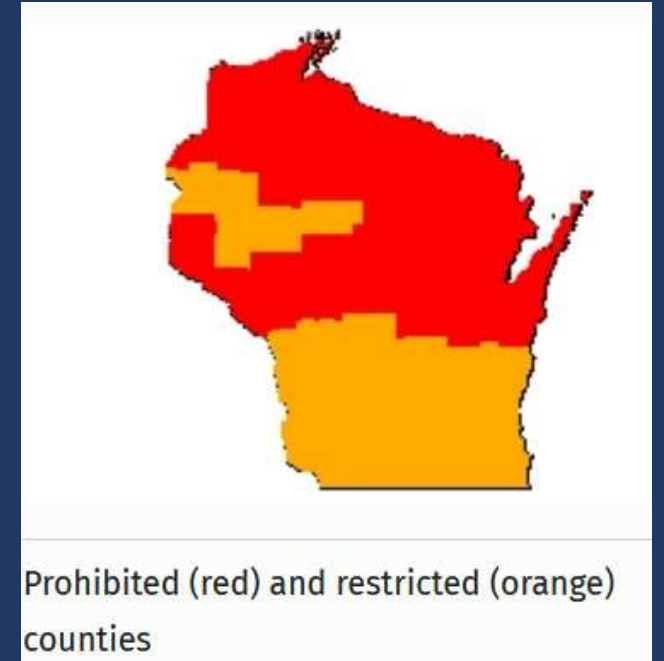
(*Anthriscus sylvestris*)

One report in Ashland

Leaves: Alternate, fern-like the leaf base clasping the stem.

Flowers: Umbels of tiny, 5-petaled, white flowers blooms late May through early July.

Roots: Thick taproot with lateral buds can be up to 6' deep



The End

